

Friday,  
March 1, 2024

# WANT ADS

*KEA*

Kennewick Education Association

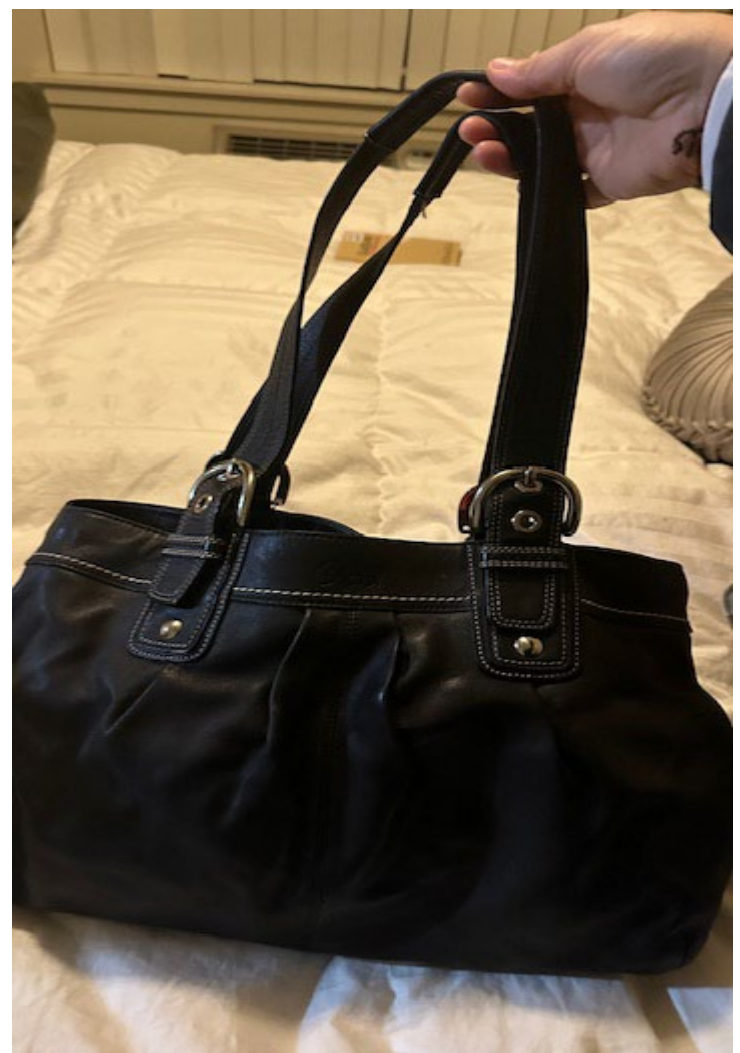
[Pteal@washingtonea.org](mailto:Pteal@washingtonea.org) 509-308-8487



**Beautiful 3 Shelf China Hutch  
w/lighted display and storage below  
\$150 Text 509-301-0983**



**Beautiful, Vibrant, 1 Year Old Sun  
Conure. \$500 Rehoming Fee. Loves  
attention and greets everyone that  
walks thru the door. Comes with  
large cage, medium cage, and  
carrying cage. Call 360-904-8103**



**Coach Leather Bag \$60  
Good Condition –  
Contact Olga 509-840-1944**



Friday,  
March 1, 2024

# WANT ADS

Kennewick Education Association

[Pteal@washingtonea.org](mailto:Pteal@washingtonea.org) 509-308-8487

*KEA*



**6 Halloween Plates \$20**  
**Call 509-460-7330**



**4 Halloween Glasses \$15**  
**Call 509-460-7330**



**4 Tall Halloween Glasses \$20**  
**Call 509-460-7330**



**iHelmet Laser Comb asking \$75**  
**SC12 FDA cleared for Hair**  
**Regrowth. Never Used! Still in**  
**Original Sealed Box.**  
**New \$330, found online used and**  
**box open for \$129.99.**  
**Text 509-539-4415**



**Rossignol Slalom Junior STS Equipe**  
**157 Skis \$75 Text 253-221-1215**



**Women's Toms Size 7.5 Like New**  
**\$20 – Call 509-947-6136**



Friday,  
March 1, 2024

# WANT ADS

Kennewick Education Association

[Pteal@washingtonea.org](mailto:Pteal@washingtonea.org) 509-308-8487

*KEA*



**Decorative Fireplace Screen. Does not produce heat. Just an insert. \$25  
Contact Renee at 509-628-7836**



**Oak Beveled Mirror  
Comes with European Secure  
Mounting Bracket.  
Measures 35"x55" \$100 OBO  
TEXT: 509-551-5058**



**Youth Docs Size 4 Like New \$30  
Call 509-947-6136**



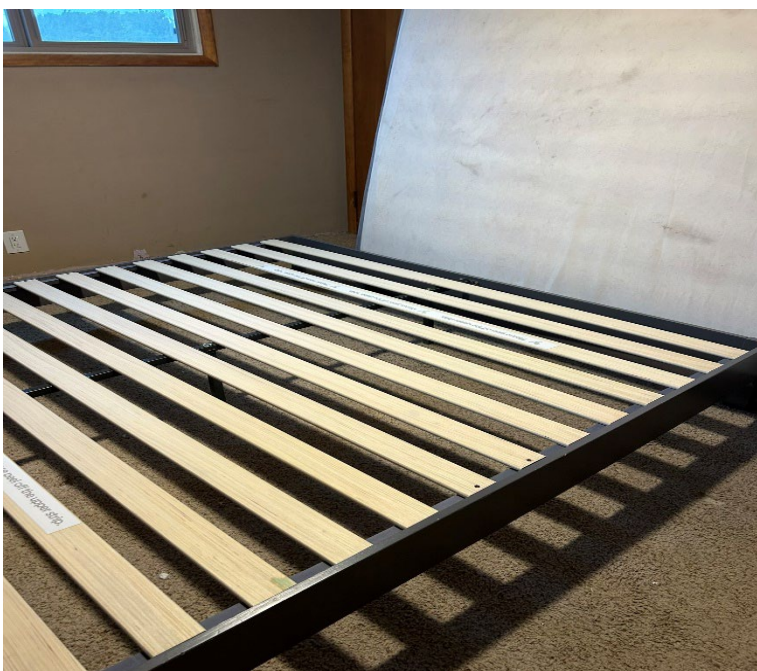
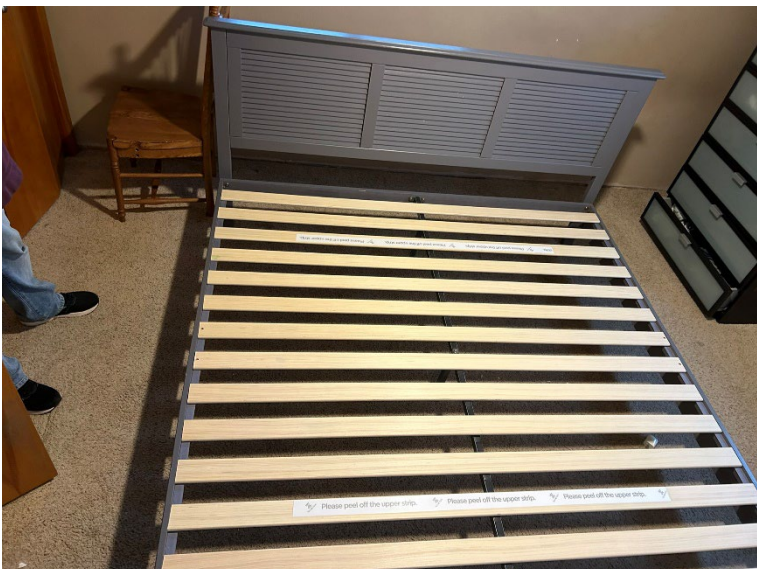
Friday,  
March 1, 2024

# WANT ADS

Kennewick Education Association

[Pteal@washingtonea.org](mailto:Pteal@washingtonea.org) 509-308-8487

*KEA*



**Bow Flex Max Trainer M6 like new  
lightly used, asking \$750 ~~\$650~~ OBO  
For More Information, call or text  
Jesus at 509-847-8830**

**King Size Bed Platform Frame and  
Memory Foam Mattress from  
Costco. Great Condition. \$400  
Contact Renee at 509-628-7836**



Friday,  
March 1, 2024

# WANT ADS

Kennewick Education Association

[Pteal@washingtonea.org](mailto:Pteal@washingtonea.org) 509-308-8487

*KEA*



**Brand New Ashland Doormats –  
Rainbow 28.7” x 17.7”x 0.59”  
\$12 each or all 3 for \$30  
Text 702-505-7636**



**Women's New Report Size 8 \$25  
Call 509-947-6136**



**Official Speed Stacking Cups with  
G5 Timer, Mat and 12 Blue Cups \$15  
Text 253-221-1215**

## HOW TO PLACE AN AD

**Ads are free to all KSD Employees**

**Compliments of KENNEWICK  
EDUCATION ASSOCIATION**

**Please send info on your item,  
include a picture, price, and contact  
number.**

**Do Not Send a KSD Phone number  
or KSD email address**

**Info must be received by  
Wednesday, 4pm of the week you  
want your Ad to run.**

**Your Ad will run for 2 weeks unless  
you notify me that the item has sold.**

**[Pteal@washingtonea.org](mailto:Pteal@washingtonea.org)**



**6 Plates, 5 Plate Stands  
7-8” Diameter \$15  
Call/Text 509-438-4082 if  
interested**



Friday,  
March 1, 2024

# WANT ADS

Kennewick Education Association

[Pteal@washingtonea.org](mailto:Pteal@washingtonea.org) 509-308-8487

*KEA*



**Small Wooden Desk \$30**  
**Contact Renee at 509-628-7836**



**Like New – Art Caddy**  
**(32" length x 24" height x 3" width) –**  
**2 inside pouches, zip closure. \$25**  
**Text 702-505-7636**



**39 X 19 Picture, \$10**  
**Call or Text 509-222-8595**



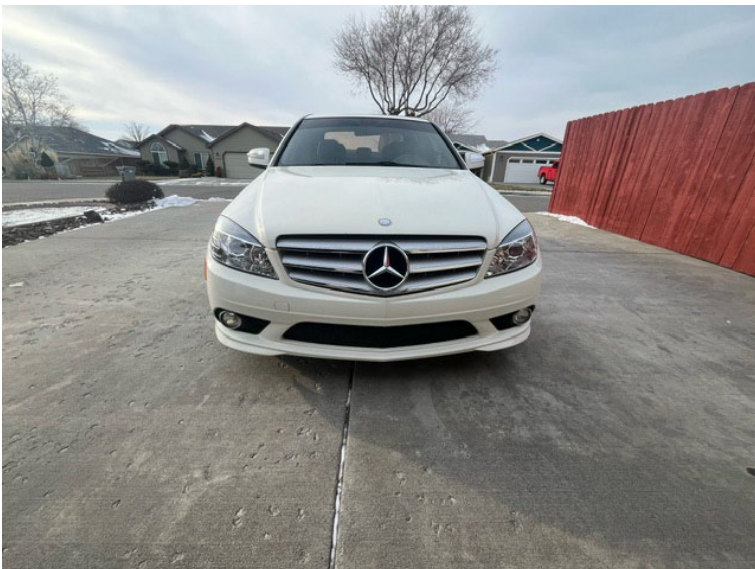
Friday,  
March 1, 2024

# WANT ADS

Kennewick Education Association

[Pteal@washingtonea.org](mailto:Pteal@washingtonea.org) 509-308-8487

*KEA*



## 2009 Mercedes Benz C-Class C-300

**84,437 MILES. SPORT EDITION. REAR WHEEL DRIVE, 3.0L 6 CYL, AUTOMATIC. LEATHER PACKAGE, KEYLESS ENTRY, FOG LIGHTS, PREMIUM WHEELS, PIONEER TOUCH SCREEN NAVIGATION, BLUETOOTH, PREMIUM SOUND SYSTEM WITH TWO 10 INCH KICKER SUBWOOFERS, ROCKFORD FOSGATE PREMIUM AMPLIFIER, VERY GOOD CONDITION. ~~\$10,900~~ **\$10,500** OBO CONTACT: CARIN 509-531-4785**



Friday,  
March 1, 2024

# WANT ADS

*KEA*

Kennewick Education Association

[Pteal@washingtonea.org](mailto:Pteal@washingtonea.org) 509-308-8487



**Custom Solid All Wood Desk \$120**  
**Call 509-531-5391**



**I Crate – New \$20**  
**Text 509-591-5748**



**Comfy Loveseat 55" long 42" tall**  
**\$50 Text 509-430-3466**



**Wicker Mirror \$25**  
**Contact: Andres at 509-498-0547**



**Set of 4 Bridgestone**  
**Turanza Quiet Track**  
**225/50R17 94V Tires for Sale.**  
**Run <5K miles, no repairs, 8/32"**  
**tread depth. \$500 OBO**  
**Call or Text Marc at 509-778-2733**



**Valentines Day Glasses \$20**  
**Call 509-460-7330**



Friday,  
March 1, 2024

# WANT ADS

Kennewick Education Association

[Pteal@washingtonea.org](mailto:Pteal@washingtonea.org) 509-308-8487

*KEA*



**White Side Table \$40**  
**Contact: Andres at 509-498-0547**



**Nordica Front Entry Line V25 Ski Boots Ladies SZ 7 \$50**  
**Text 253-221-1215**



**Salomon SR 301 Nordic Cross Country Ski Boots Size EU 40 (Ladies Sz 7) \$25 Text 253-221-1215**



**Nowax Trak 195cm Cross Country Skis W/ Exel Polaris 140cm Poles \$50 Text 253-221-1215**



**Vintage Wall Fan \$20**  
**Contact: Andres at 509-498-0547**



Friday,  
March 1, 2024

# WANT ADS

*KEA*

Kennewick Education Association

[Pteal@washingtonea.org](mailto:Pteal@washingtonea.org) 509-308-8487



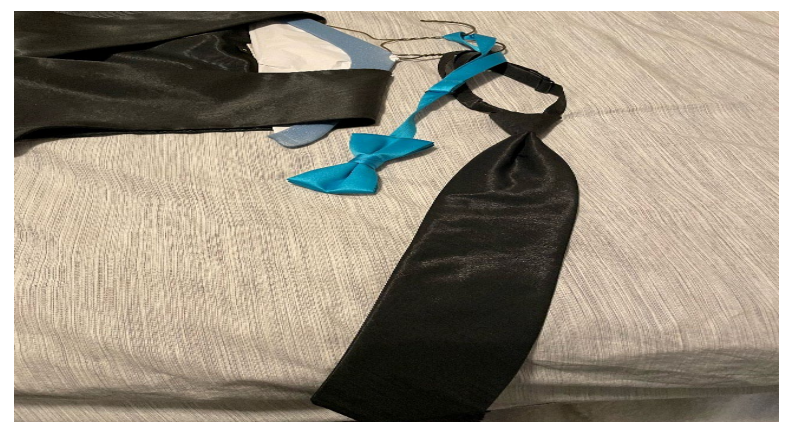
**Hunter X Hunter Chibi Characters  
Mini Backpack Brand New \$50**



**Brand New Kohler Archer White  
Drop-In Rectangular Traditional  
Bathroom Sink  
(22.625 in. x 19.4375 in.)  
\$150 Text 253-221-1215**



**3 Speed Tinker Bell Ceiling Fan with  
Reversible Flow \$125  
Text 253-221-1215**



**Tux – Perfect for Prom!  
Pants – Adjustable Waist Size 30-30  
with room to adjust  
Jacket – Size 38R  
Vest – Size Small  
Shirt – Size M 34-35 \$50  
Text 509-430-3466**



Friday,  
March 1, 2024

# WANT ADS

Kennewick Education Association

[Pteal@washingtonea.org](mailto:Pteal@washingtonea.org) 509-308-8487

*KEA*



**HOUSE  
FOR SALE \$839,000**



- 3 bed/2 bath + office
- Built in 2007
- New HVAC in 2022
- 2939 sq. ft.
- 1441 sq. ft. 3 bay garage,  
1 oversized
- .89 acres

- Open floor plan with lots of natural light
- Covered porch/patios with views
- Gas fireplace
- Large bonus room w/ closet
- Ample storage throughout

100603 Hillview Dr.  
Kennewick, WA

Showings by appointment  
(509) 528-0183



**Lightweight easel with adjustable 3/4 aluminum tubular legs that securely twist-lock. Fully adjustable height extend for floor display or downsize to 34 tabletop display. No-pinch pad retainer makes one-handed operation effortless. Holds easel pad as large as 27 x 34 or only a single sheet. Conveniently downsize for storage and transport. \$45.00 Text 253-221-1215**



**Frigidaire Refrigerator \$600**

**2 1/2 years old, it has a dent on the side and slight dent on the freezer door. Text 808-895-9620 Michelle**



Friday,  
March 1, 2024

# WANT ADS

Kennewick Education Association

[Pteal@washingtonea.org](mailto:Pteal@washingtonea.org) 509-308-8487

*KEA*



**Old Trunk \$30 OBO. Call or Text  
509-492-6622 Thanks!**



**Good daily driver, we are upsizing due to growing family. Ford Focus SE with 142,300 miles, 2.0 L 4-cyl, front-wheel drive, automatic transmission, cruise control, AC/heat, power windows, power locks. Car is in fair condition save for some minor cosmetic damage which can be shard and radio does not work. This model of focus commonly has clutch issues in the transmission due to a manufacturing design. They may need to be replaced in the future but is ready to drive. Does shutter from time to time when shifting from gear, one to gear two. New tires with less than 10,000 miles on them. 3-month-old heavy duty battery installed. I'm the 2nd owner. Clean title! Asking \$3,500 OBO. If interested, please reach out to [pjunk222@gmail.com](mailto:pjunk222@gmail.com) for more info/pictures!**